

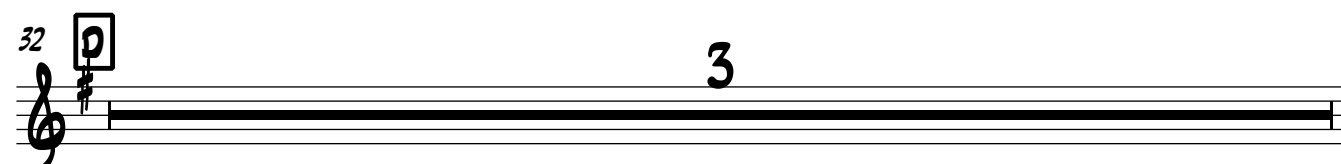
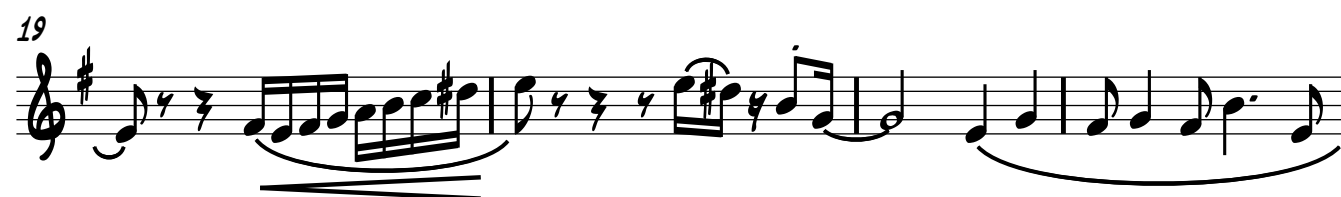
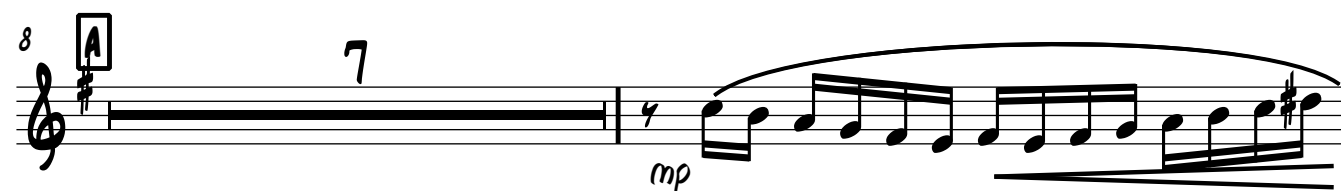
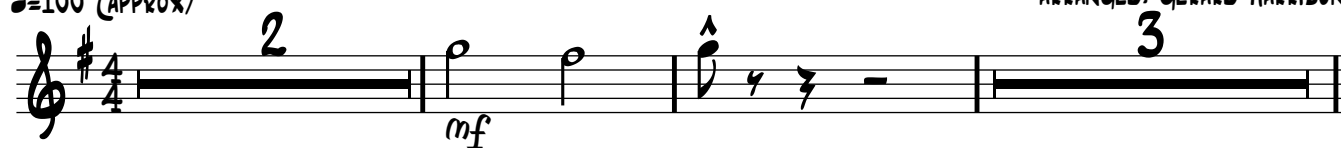
TRUMPET 2

KIMO SAMBA

COMPOSED BY: MIKE SMITH

ARRANGED BY: GERARD HARRISON

♩=100 (APPROX)



35

39

44

48

60

63

67

71

76

82

E E_{M7} C_{MAJ7} $A7/C\sharp$ $D^6/9$ $B7b9$ E_{M7} C_{MAJ7} $F\sharp7^9$ B_{SUS}

F 4 **G** 7

H

I

J 3

K

mf

mp

f

ff